

28th

Okinawa Zoo & Museum

沖縄こどもの国

Year-end & New Year Event

The Biggest Illumination in Okinawa

Christmas Fantasy²³

The Biggest Attraction in Japan

Music, Illumination & Fireworks

Super Aurora Attraction

Niagara

2023

2024

Dec. 16(Sat) ▶ Jan. 8(Mon)

No Event Day: Dec. 18, 19, 20, 21, 22, 26; Jan. 1, 4 and 5

Welcome to a dream world where it snow and the aurora appears on Okinawa.

Operating Hours 4:30 - 9:30 p.m. (Last enter 9 p.m.)
Dec. 31 Year-end Countdown at 4:30 p.m. - 1 a.m. (Last enter 12 a.m.)

Heartland



Snowfall Show



Santa Claus



Zombies Street



Dinosaurs Show

Dec. 23 - Jan. 8 **Fantasy Day**

2023 ▶ 2024
Countdown



Dec. 16 (Sat) World's Dance Festa

Dec. 17 (Sun) Eisa Performances



Dec. 31 New Year's Eve

(Special Operating Hours: 4:30 p.m. - 1 a.m.)

Many Other Performances!

Many Gorgeous Artists Appear!

Event Site

Okinawa Zoo & Museum

沖縄こどもの国

5-7-1 Goya, Okinawa City, Okinawa



HP



Adults & H.S. Students
大人(高校生以上)

Children age 4 to J. High School
子ども(4歳~中学生まで)

This event will happen rain or shine.

Advance 前売券 ¥2,100

At Gate 当日券 ¥2,400

Advance 前売券 ¥1,200

At Gate 当日券 ¥1,400

3歳以下
入場無料

Children age 3 and under the admission is free.

- Junior High School Students and younger must be accompanied by an adult.
- Minors entry must be accompanied by an adult or adult guardian for the Dec. 31 Countdown Event.
- Outside food and drinks are not permitted. Please use event site food booths.
- Please check the Okinawa Zoo & Museum website for the Okinawa Zoo & Museum business hours.

Christmas Fantasy **CLICK**

Christmas Fantasy Executive Committee

Please check the website for event details.

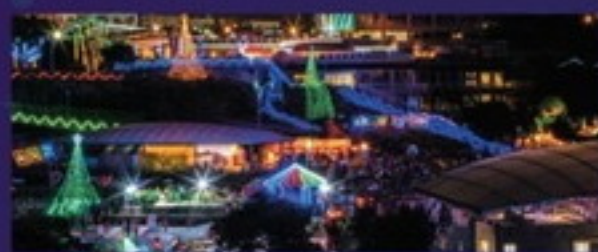
Every
Day!

Illumination Photo Spot イルミネーションスポット

Amusement Park of Lights
光のゆうえんち

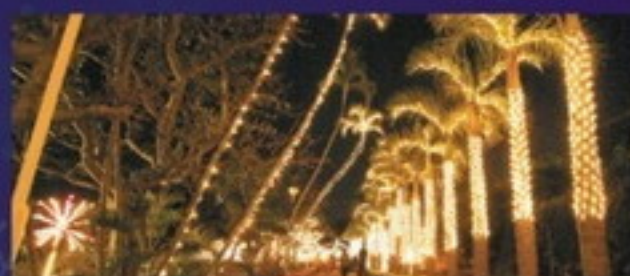


The See It All Hill
100万ドルの丘



You can see the panoramic view of all Christmas illuminations from this hill. This romantic location is good for couples.

Illumination of Palm Trees
光のヤシ並木道



Everyone will be warmly welcomed by the row of palms, which are decorated with lights.

Lantern Area
ランタンエリア



A huge lantern area with an exotic atmosphere! Children will be delighted with the large Shiisaa and many animal lanterns.

Heartland
ハートランド



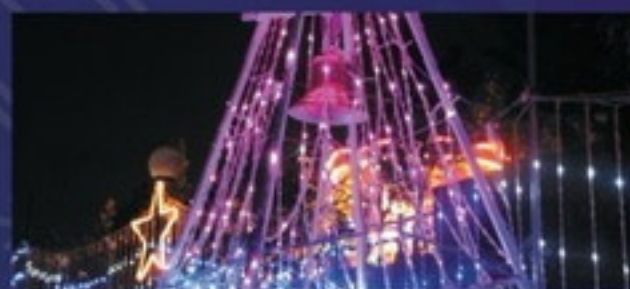
Pink heart tunnel, a popular location for photography. Walk hand in hand with your sweetheart or family.

Niagara
ナイアガラ



A dynamic 50 meters full length blue lighted world. You will feel like you're walking by a waterfall when you pass between the illuminations.

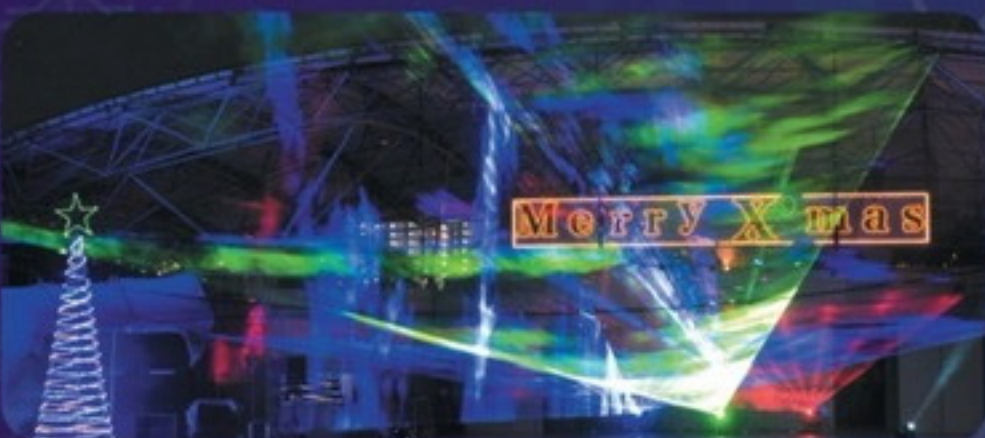
Happy Bell
ハッピーベル



Ring the bell with your most beloved! Write a wish at the heart shaped picture tablet.

The Largest in Japan

Super Aurora Attraction with music, beams and fireworks



The largest laser beam show in Japan will perform this year too with more impressive scale lights.

Please check the website for the program.

There are
Bouncers!



Dec. 31!!
New Year's Eve

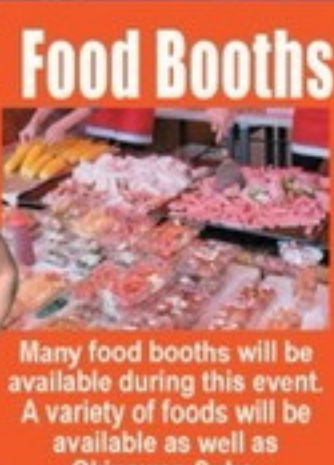
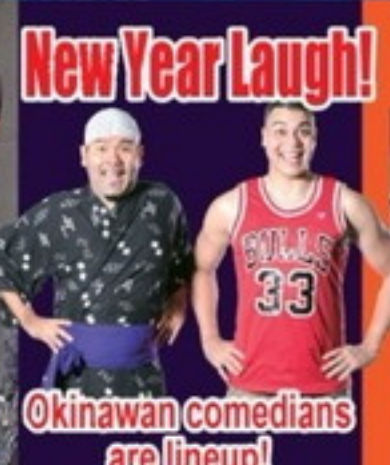
2023▶2024
Countdown



Special Operating Hours (Last enter 12 a.m.)

4:30 p.m. – 1 a.m.

Dec. 23 – Jan. 8 Fantasy Day



Event Operating Calendar December, 2023

開催	開催	No Event	No Event	No Event	No Event	No Event	開催	開催	開催	No Event	開催	開催	開催	開催	開催	No Event	開催	開催	No Event	No Event	開催	開催	開催
16 土	17 日	18 月	19 火	20 水	21 木	22 金	23 土	24 日	25 月	26 火	27 水	28 木	29 金	30 土	31 日	1 月	2 火	3 水	4 木	5 金	6 土	7 日	8 月祝

January, 2024

Advance tickets are on sale until Dec. 22 at each play guide!

Will be sale the door tickets from Dec. 23. You can be purchased the door tickets at all convenience stores.

- LAWSON Ticket (L-code: 81654) ●Family Mart (e-plus) ●Seven-Eleven
- Coop Stores (Apure, Kokuba, Misato, Yamauchi, Oroku, Nago- Miyazato)
- Yui Work ●Kadena ITT ●MCCS Tours+ ●Okinawa Zoo & Museum

Christmas Fantasy

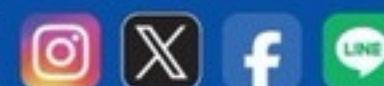
CLICK



沖縄こどもの国

Okinawa Zoo & Museum

This event will happen rain or shine.



Okinawa Zoo & Museum (for event site) TEL: 098-933-4190
Christmas Fantasy Executive Committee (for this event)
TEL : 070-5402-0755

Large parking lot available at Okinawa Zoo & Museum.